

# DINGO TX 1000



**UNMATCHED STRENGTH**  
Over 1,000-lb rated operating capacity to lift and transport heavy loads.

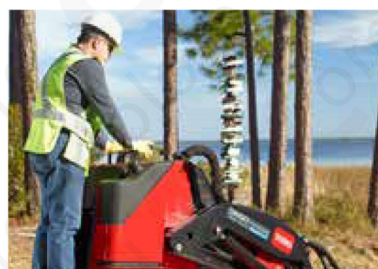
## SPECIFICATIONS

	DINGO TX 1000 (MODEL 22327)	DINGO TX 1000 WIDE TRACK (MODEL 22328)	
<b>ENGINE</b>	Engine	Kubota® D1305 Diesel	
	Air Filter	Two-stage, heavy-duty, remote	
	Cooling System	Liquid Cooled	
	Fuel Tank	11.5 gallons (44 liters)	
	Oil Capacity	6.0 quarts (5.7 liters)	
<b>HYDRAULIC SYSTEM</b>	Hydraulic Pressure	3,000 PSI	
	Hydraulic Flow	Traction: 13.3 gpm (each pump) Auxiliary: 15.2 gpm	
	Reservoir Capacity	15.2 gallons (57.5 liters)	
<b>TRACKS</b>	Standard	Sprocket-drive, 6 road wheels per side	
	Traction	Dual hydrostatic pump	
<b>DIMENSIONS</b>	Track Width	127.6" x 5.9" (324 cm x 15 cm)	127.6" x 9.5" (324 cm x 24 cm)
	Wheelbase	41" (10 cm)	
	Ground Clearance	6.0" (15 cm)	
	Overall Dimensions (WxLxH) With Bucket	33.7" x 100.7" x 53.2" (86 x 256 x 135 cm)	41" x 100.7" x 53.2" (104 x 256 x 135 cm)
	Overall Dimensions (WxLxH) Without Bucket	33.7" x 81.7" x 53.2" (86 x 208 x 135 cm)	41" x 81.7" x 53.2" (104 x 208 x 135 cm)
	Maximum Operating Height	105" (267 cm)	
	Hinge Pin Height	81" (206 cm)	
	Dump Height	61" (155 cm)	
	Dump Angle	40-degrees	
	Reach - Fully Raised	24.5" (62 cm)	
	Ground Speed	4.7 mph (7.6 km/h)	
	Weight	2610 lbs (1184 kg)	2790 lbs (1266 kg)
	Tip Capacity	2,857 lbs (1,296 kg)	3,071 lbs (1,393 kg)
	Rated Operating Capacity (35% of Tip Capacity)*	1,000 lbs (454 kg)	1,075 lbs (488 kg)
	Ground Pressure	5.5 PSI	3.6 PSI



### MAXIMUM HEIGHT & REACH

81" hinge pin height allows operator to dump into 30-yard dumpster or side of one-ton truck.



### TORO EXCLUSIVE CONTROLS

Effortless traction controls are easy to use for all-day productivity.

\*SAE J818 Rating of 35%

